

Installation of the Certum S/MIME certificate in Outlook

Ver. 1.4

assecO

 **Certum**
by assecO

Table of contents

1. Downloading the certificate	3
2. Installation of the certificate in the system	3
Certificate stored in Windows certificate manager	3
Certificate stored in the cryptographic card	4
3. Installation in Outlook application	5

1. Downloading the certificate

The issued certificate can be downloaded from the certificate creation e-mail or from the **Certificate details** view in the Data Security Products in your Certum store account in a convenient **PEM** or **DER** encoding. You can install your certificate on the cryptographic card from the **Certificate details** view.

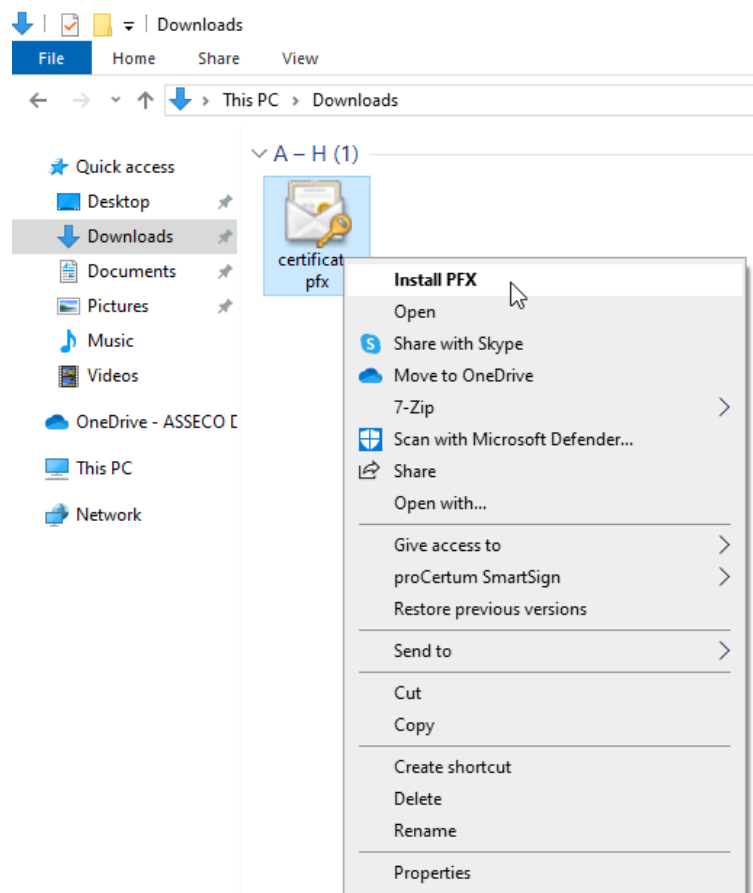
From the **Certificate details view** you can also download subordinate certificates for your certificate to install them in your system. Download them and install in the system by double clicking them and following the installation wizard.

To create PFX file, you can use the [Certum Tools](#) generator or check [generating CSR with OpenSSL instruction](#) which also describes of how to create PFX file.

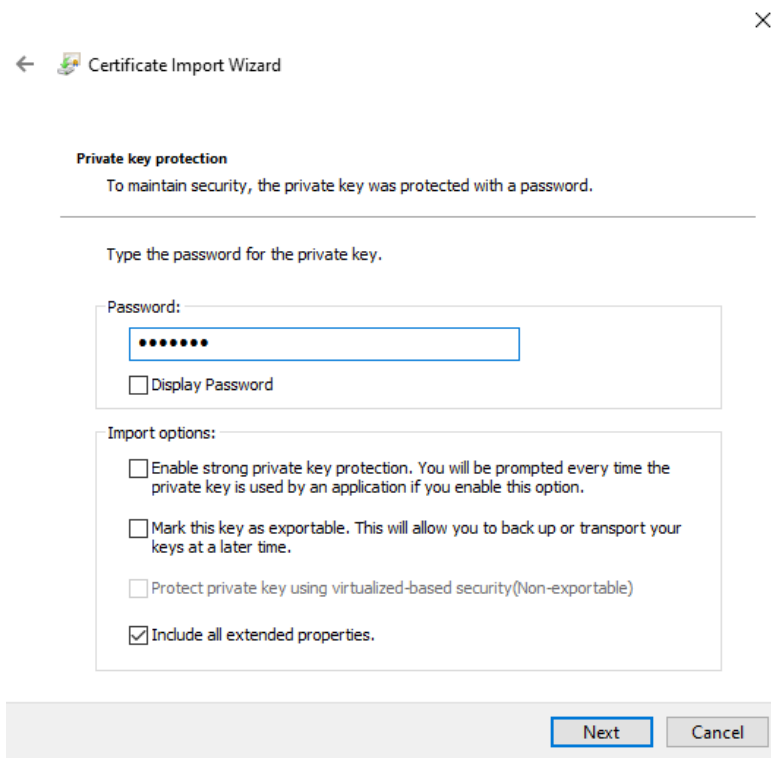
2. Installation of the certificate in the system

Certificate stored in Windows certificate manager

To install you certificate in the system, open the PFX file with your certificate and follow the instructions in the Certificate Import Wizard.

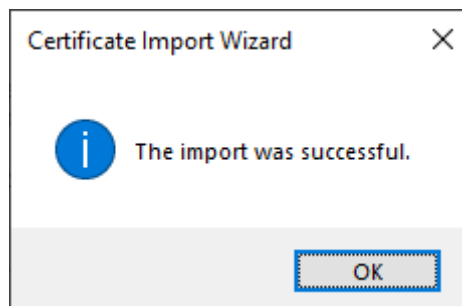


During the import, you need to put the password, you have set while you generated the PFX file.



The screenshot shows the 'Certificate Import Wizard' dialog box. The title bar includes a back arrow, a certificate icon, and the text 'Certificate Import Wizard', followed by a close button (X). The main content area is titled 'Private key protection' and contains the text: 'To maintain security, the private key was protected with a password.' Below this is a horizontal line and the instruction: 'Type the password for the private key.' There are two input sections: 'Password:' with a text box containing seven dots and a 'Display Password' checkbox; and 'Import options:' with four checkboxes: 'Enable strong private key protection...', 'Mark this key as exportable...', 'Protect private key using virtualized-based security(Non-exportable)', and 'Include all extended properties.' (which is checked). At the bottom right, there are 'Next' and 'Cancel' buttons.

The success screen will inform you that the operation was successful.

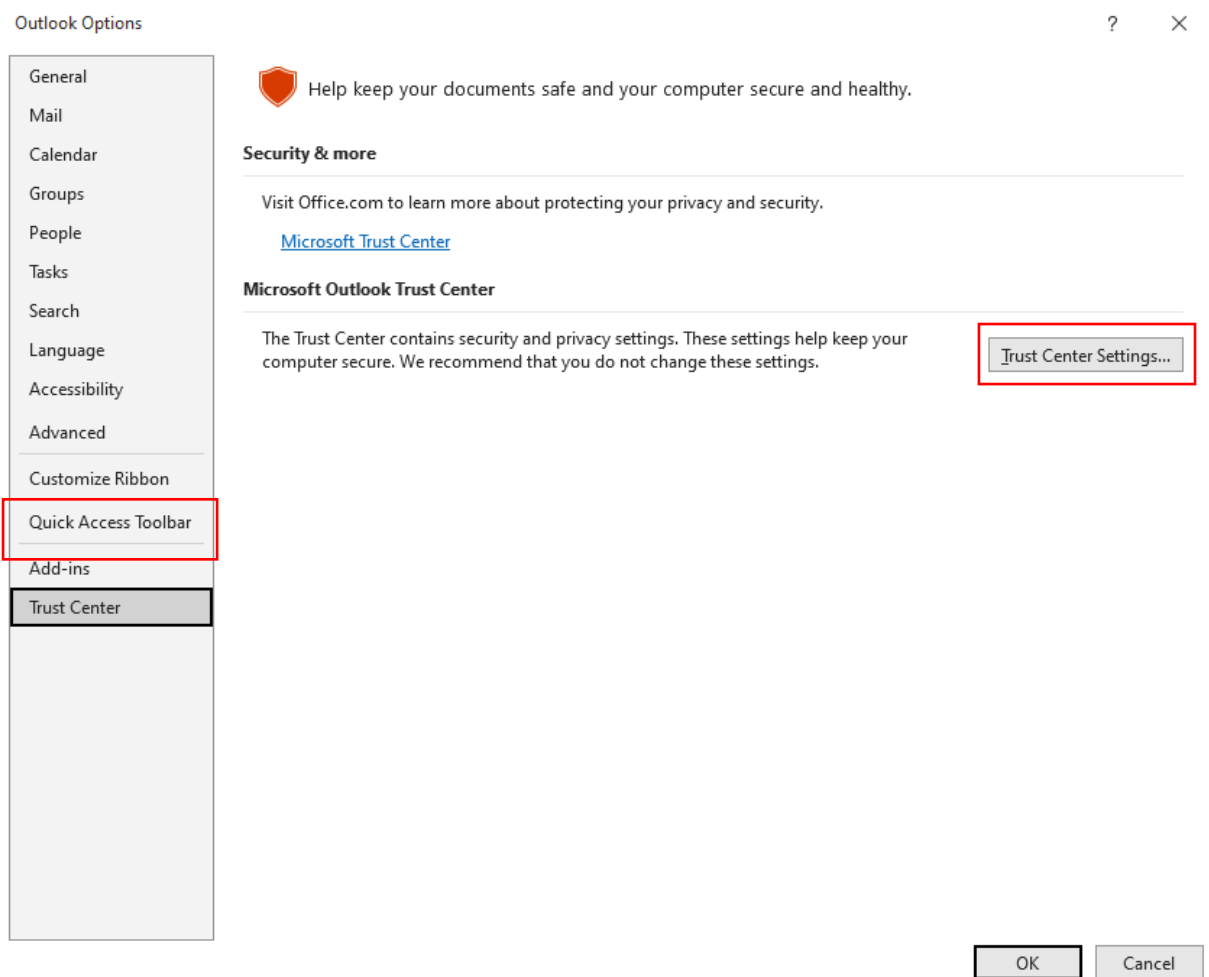


Certificate stored in the cryptographic card

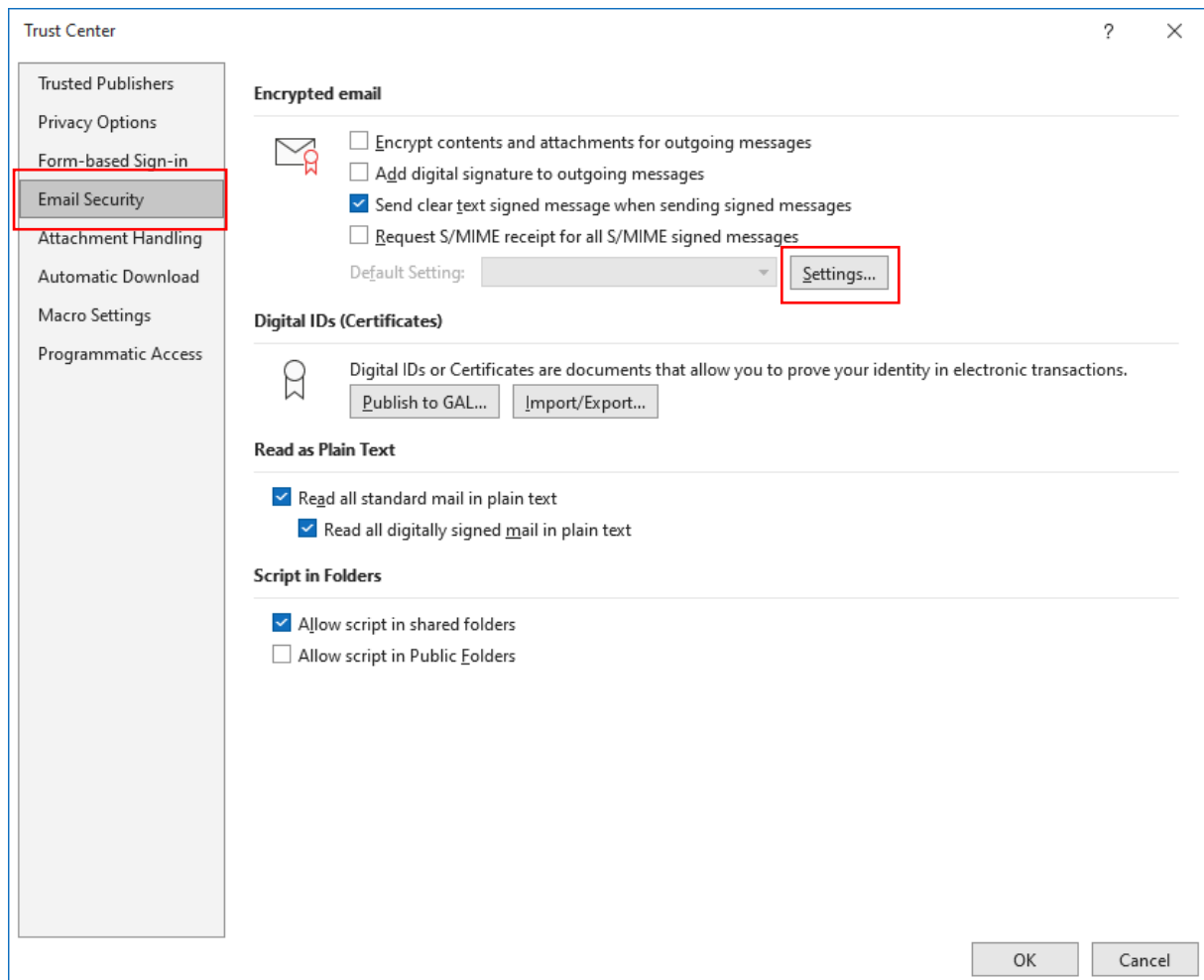
Make sure that you have the card inserted into the reader, the reader connected to the computer and the certificate is installed on the cryptographic card. The process also requires having the proCertum CardManager application installed on your computer, where you can check if your certificate is installed in common profile and the status of PIN and PUK codes.

3. Installation in Outlook application

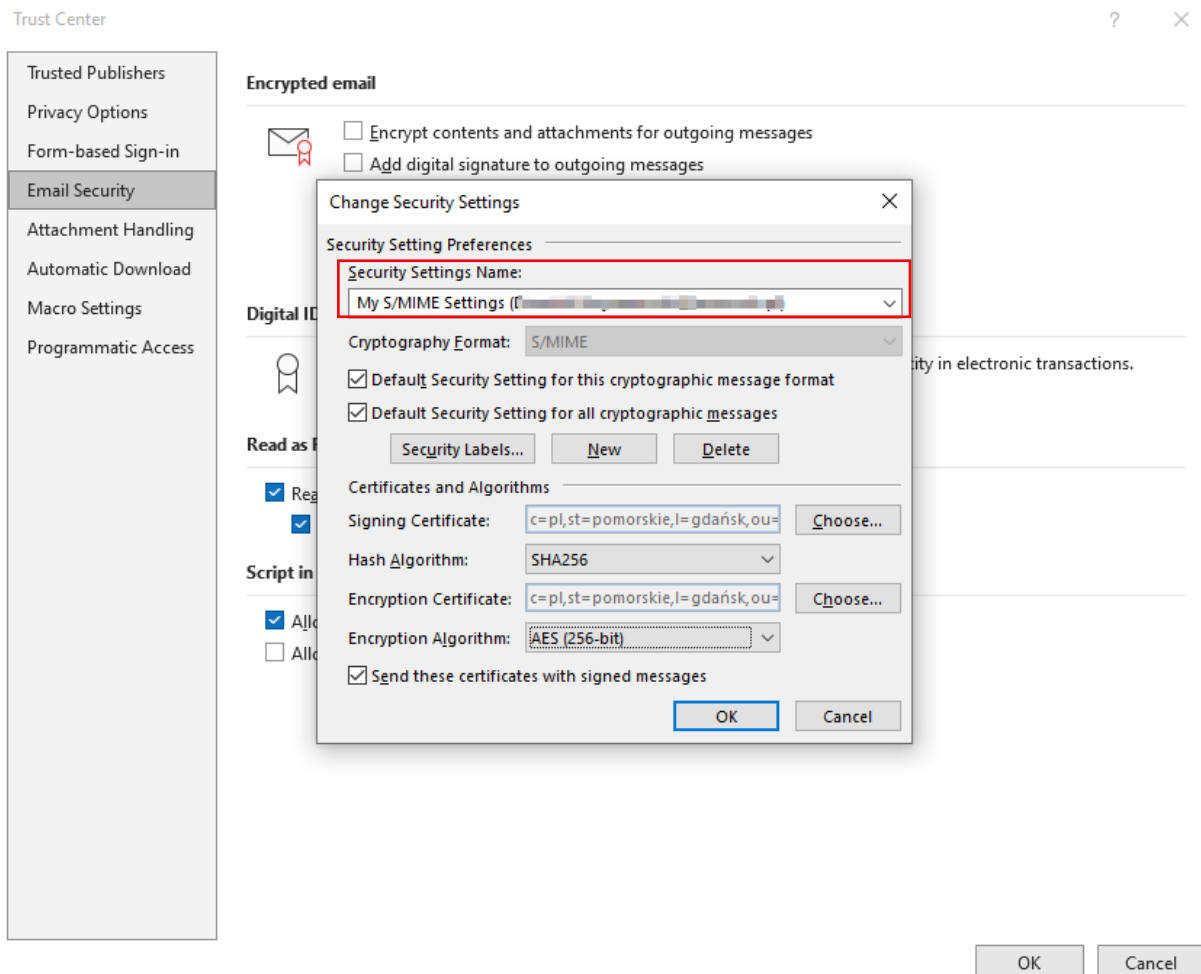
Open you Outlook client, choose **File** and **Options**. In the next window choose the **Trust Center**, and there the **Trust Center Settings...**



In the next stage choose **Email security** and **Settings...**



Select your certificate from the list and choose the settings for signing. After this, click OK to save it.



Now you can add your digital signature to your emails in the new email window to confirm authenticity of your messages.

